

# BRUCHE ACADEMY, WARRINGTON

## WARRINGTON PRIMARY ACADEMY TRUST

Archive Copy Retained For Reference Only



Our vision is described as a Guiding Principle:

*"To deliver a first class education through partnership, innovation, school improvement and accountability."*

### Our Schools

WPAT was the first multi academy trust formed in Warrington in 2016, this was led by 3 local schools coming together. Our lead school is Evelyn Street Primary which is rated Outstanding by Ofsted. We are a growing MAT with 8 primary schools in our Trust covering Warrington, Halton and Cheshire West and Chester. Through the high performance of our schools, we are a regional centre for excellence for professional development championing evidence based practice.

We have been chosen as one of just 87 Teaching School Hub nationally, we provide training and development from entry to executive leadership to all schools in Halton, Warrington and Wigan; this started in 2021 and we have the contract through to 2028. We were also appointed a lead Behaviour Hub school from 2021 offering training and coaching for other schools.

We are a Strategic Partner for the Liverpool City Region and Beyond Early Years Stronger Practice Hub, offering training and support to the early years sector.

### Bruche Academy - "Success, nothing less"

Bruche is an Ofsted rated Good school and was again recently rated as the top performing primary school in Warrington, with 97% of pupils at the school meeting the expected standard in reading, writing and maths. As well as Bruche, three other primary's in Warrington's top 10 were WPAT schools. The other three were Evelyn Street (4th), Penketh (6th) and Alderman Bolton (9th).

Bruche Primary Academy in Warrington has consistently demonstrated exceptional academic performance. In 2024, the school achieved a remarkable milestone by ensuring that every pupil who participated in the Key Stage 2 assessments met or surpassed the expected standards in reading, writing, and mathematics. This accomplishment positioned Bruche Primary Academy among the top 1% of primary schools nationwide. The school is judged as good with outstanding features by OFSTED.



Design intelligence, commercial flair.

Our Guiding Principle includes both the fundamental aspiration of WPAT and how this will be accomplished. The aim of the Guiding Principle is that it provides a framework for the processes of WPAT as an organisation along with our schools, what our staff practice and how we communicate.

### Our Organisational Values:

#### Children First

We have high expectations for every child. Everything we do as an organisation is in the interest of children first and foremost

#### Resilience

We are unrelenting in our pursuit of excellence whether it is for educational outcomes or for the business function of WPAT

#### Pioneering

We are passionate about learning about practice that will improve our children's lives and their outcomes



In 2020, 2023, 2024 and 2025 the school was ranked in the 150 best-performing state primary schools in England. This recognition was based on the school's outstanding SATs results in reading, grammar, and mathematics and the personal development each child receives.

Additionally, Bruche Primary Academy has been acknowledged for its excellence in a range of curriculum subjects, receiving a gold mark of approval from the Geographical Association and national Gold awards for Religious Education and SMSC provision. As well as achieving the Primary Science Quality Mark and Best Practise with Teaching Assistants Award the school has also been awarded the Quality in Careers Education Award – a first for a primary school in Warrington! Bruche also has the Association for PE national award at distinction level.

These achievements underscore Bruche Primary Academy's unwavering commitment to providing high-quality education and fostering academic excellence among its students.

# BRUCHE ACADEMY, WARRINGTON

## SITE CONSTRAINTS & OPPORTUNITIES

Archive Copy Retained For Reference Only

Site area Approx. 32,000 m<sup>2</sup>.

The site is occupied by the existing Bruche primary school, as well as parking / drop-off areas beside Seymour Drive to the west and playing fields to the east that serve the school.

The proposal will demolish the south most buildings on site to make way for a new early years wing and a new two form entry secondary school for 300 new pupils.

- Site Boundary
- Demolitions
- Residential Interface
- Sun Path
- Pedestrian Routes
- Vehicular Routes



# BRUCHE ACADEMY, WARRINGTON


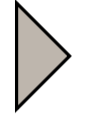




## PROPOSED SITE PLAN - SCHOOL

Archive Copy Retained For Reference Only

The proposal will be an extension to the existing school, with the new secondary entrance located close to the existing primary entrance, ensuring a robust control point and preventing any unauthorised access to the school.

The proposal will increase parking provision up to 88 spaces as well as provide 81 sheffield cycle stands around the entrances and drop off areas, promoting healthier modes of travel for the students.

Servicing routes have been positioned away from the main entrance to ensure any maintenance/servicing does not disrupt students arriving or attending classes.

-  Vehicular Access / Egress to Site
-  Pedestrian Access to Site
-  Access to Primary School
-  Access to new Early Years Building
-  Access to New High School
-  Cycle Spaces

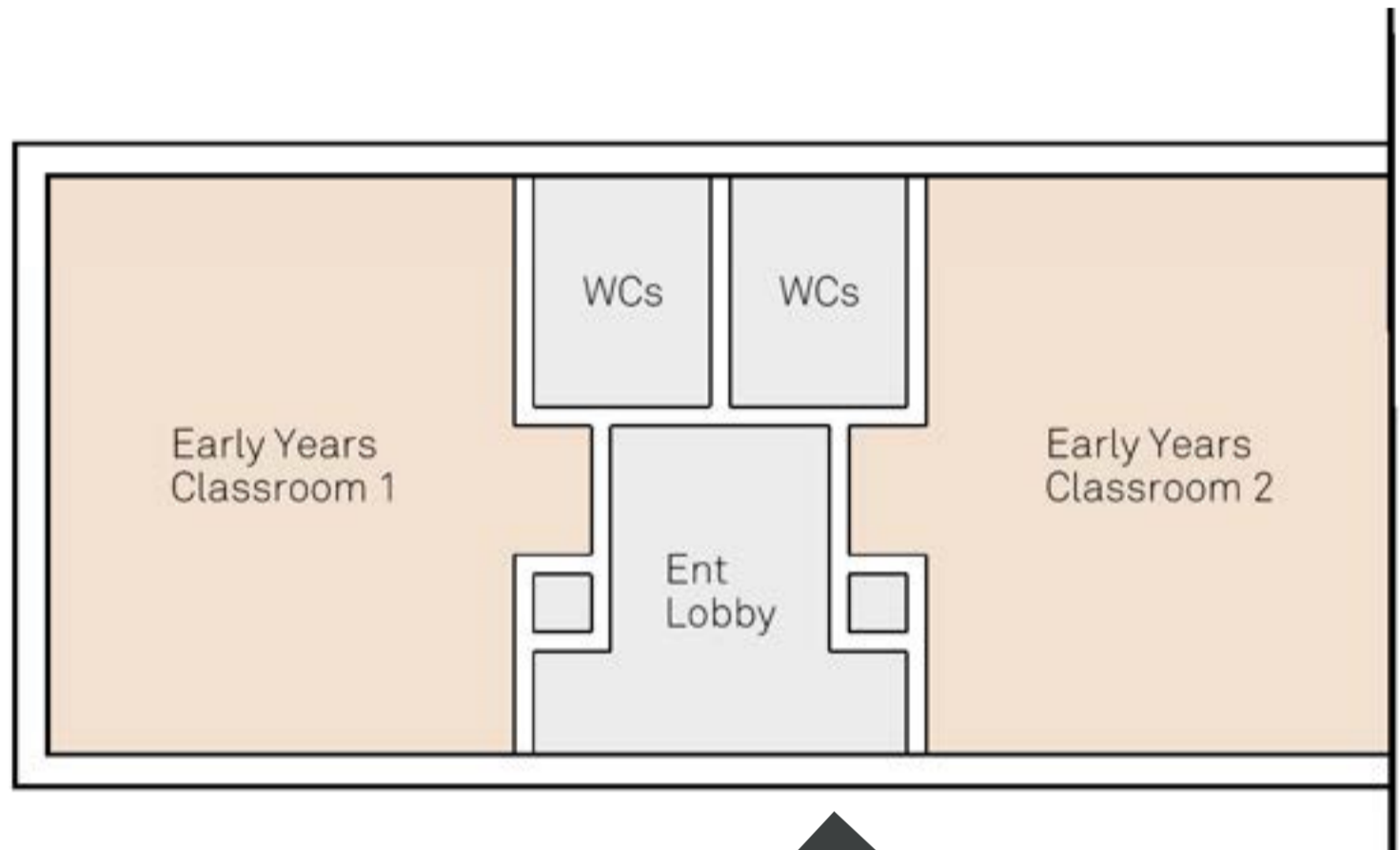


# BRUCHE ACADEMY, WARRINGTON

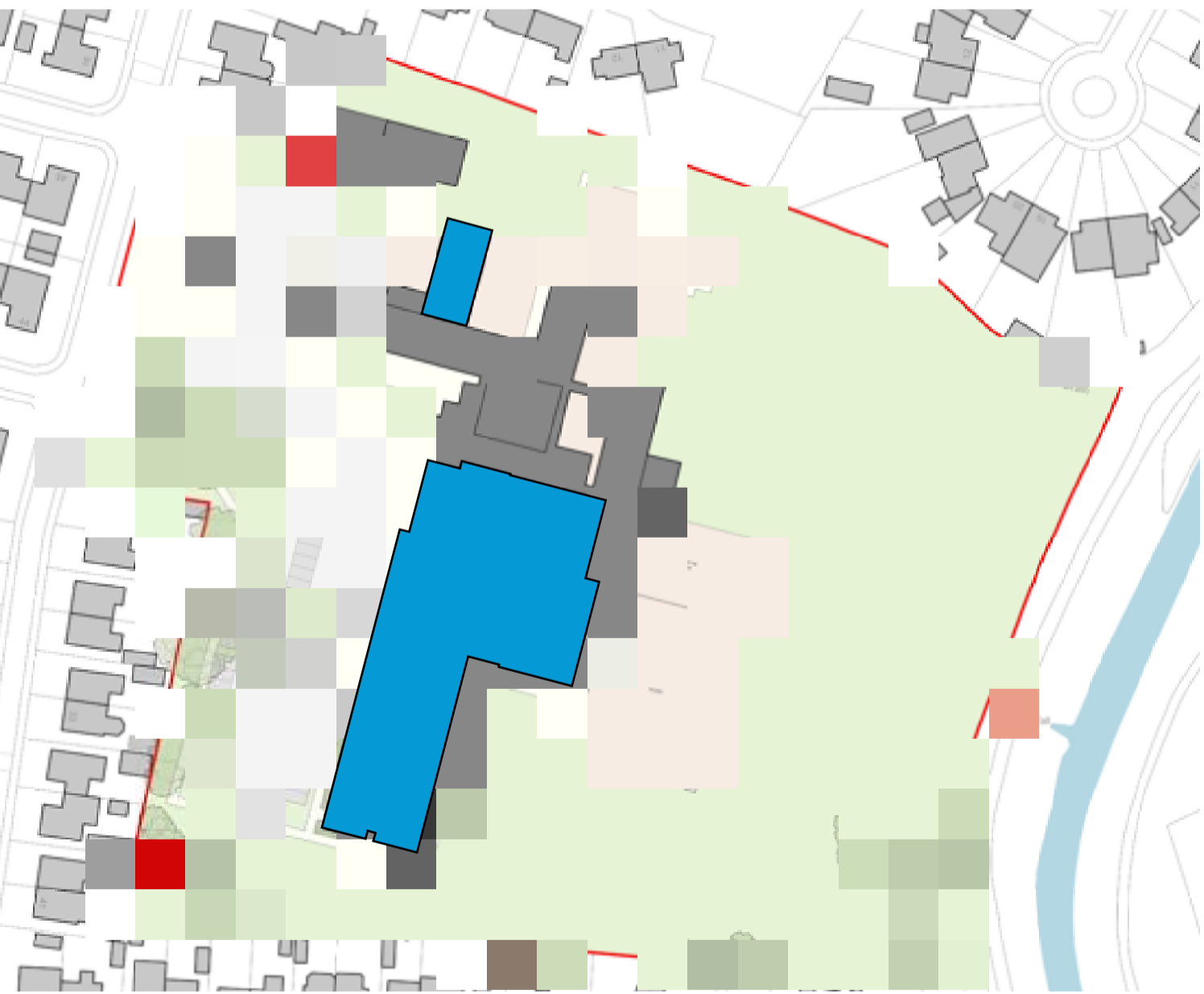
## PROPOSED NEW HIGH SCHOOL & EARLY YEARS

The proposal features a new secondary school with its own dedicated access, classrooms, DT, IT rooms, art rooms, science labs, music / dance studio and sports facilities. The proposal will also include ancillary spaces such as dining halls, staff rooms, learning resource spaces and BoH areas to serve the new secondary school.

The existing early years facilities will be demolished to make way for the new secondary school, with new modern early years classrooms provided elsewhere to replace them. These two early years classrooms will be provided with their own dedicated access and ancillary spaces.



Proposed Early Years Ground Floor Plan



Proposed Site Plan

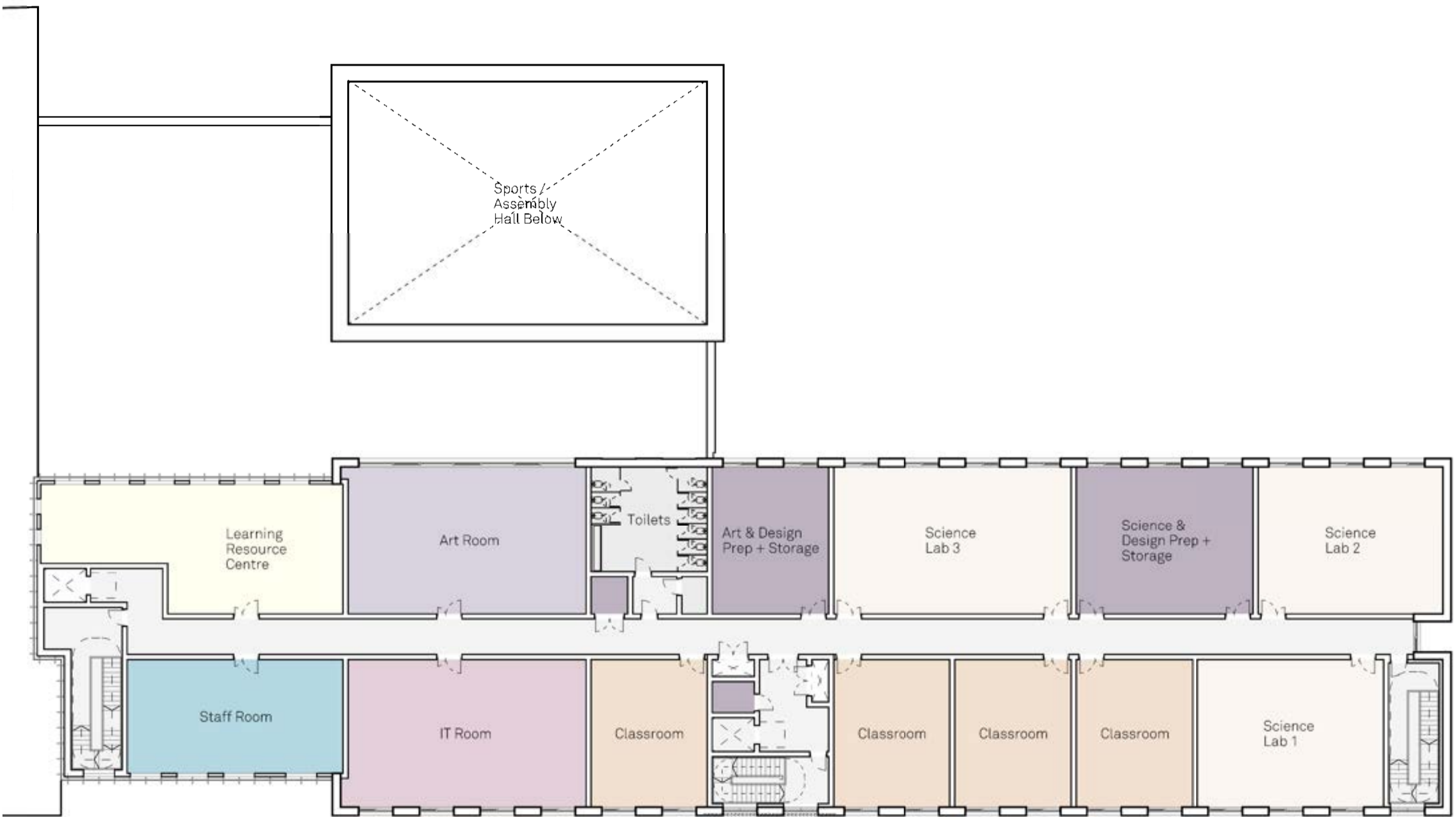


Design intelligence, commercial flair.

Archive Copy Retained For Reference Only



Proposed High School Ground Floor Plan



Proposed High School First Floor Plan

# BRUCHE ACADEMY, WARRINGTON

## PROPOSED SITE PLAN - SPORTS FACILITIES

Archive Copy Retained For Reference Only

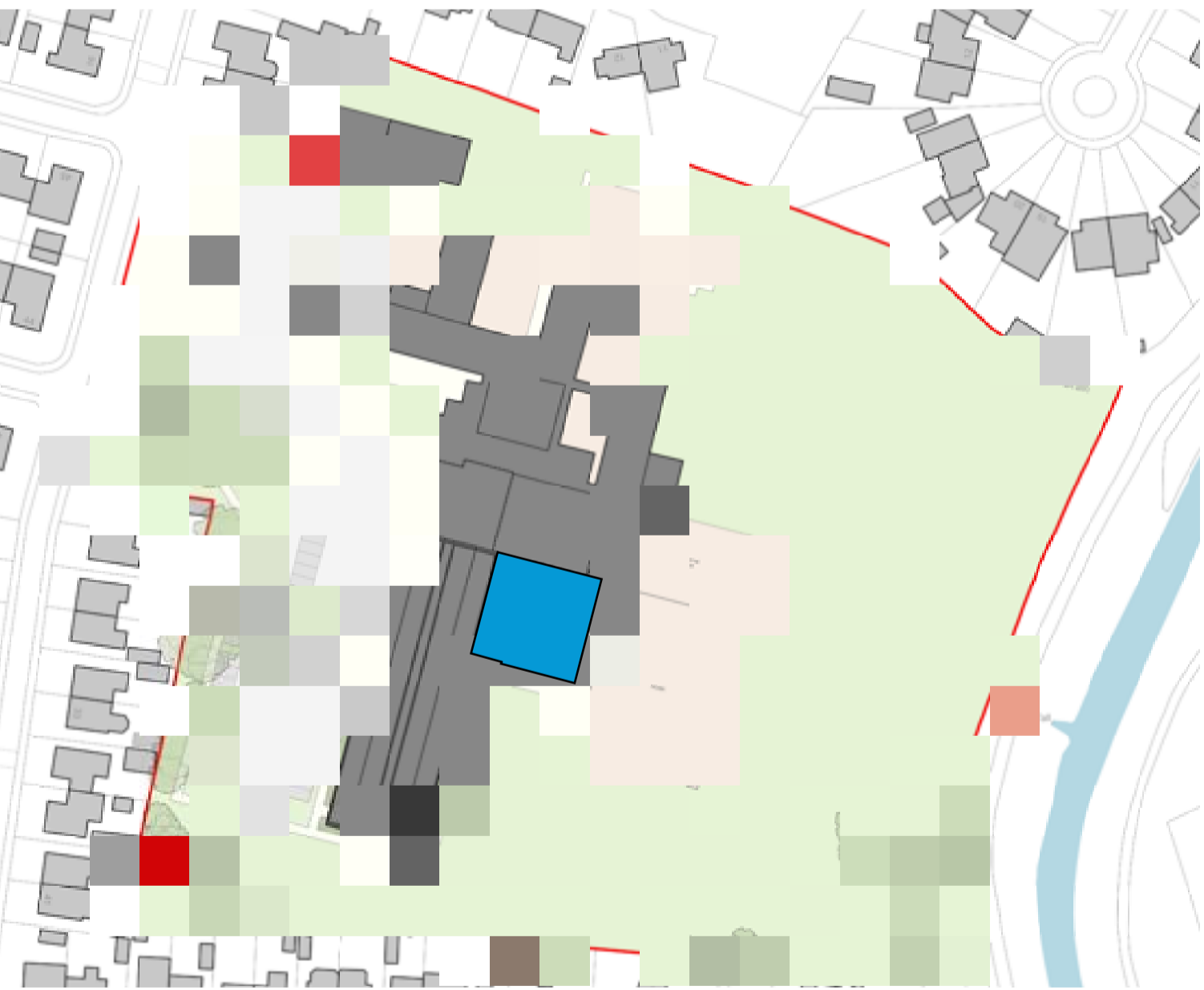
As part of the new development, a new sports hall with associated changing rooms and storage is proposed. A new Multi Use Games Area (MUGA) is also proposed adjacent to the hall besides the playing fields.

The new sports facilities will serve the students of the school and will also act as an amenity for local residents outside of school times.

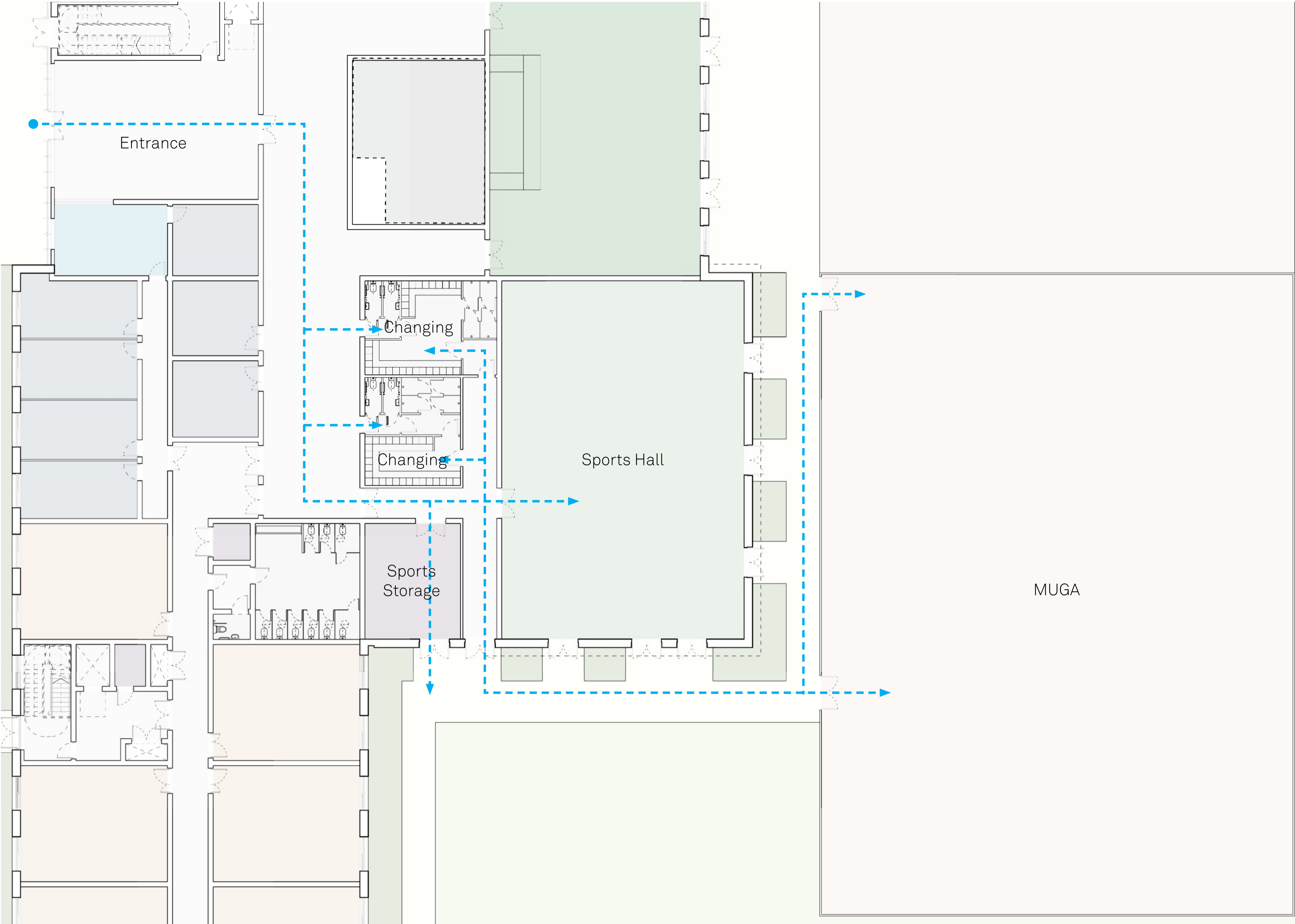
Route to changing rooms and Sports facilities.



Example of MUGA



Proposed Site Plan



Proposed Sports Facilities Plan



# BRUCHE ACADEMY, WARRINGTON

## LANDSCAPE

Archive Copy Retained For Reference Only

The landscape proposals will be developed in line with the architectural scheme for the new school.

Working with the School, we will help to develop the current site layout to maximise the efficiency for school drop off and collection, provide access for the day-to-day function of the School to minimise the impact on the adjacent residential area.

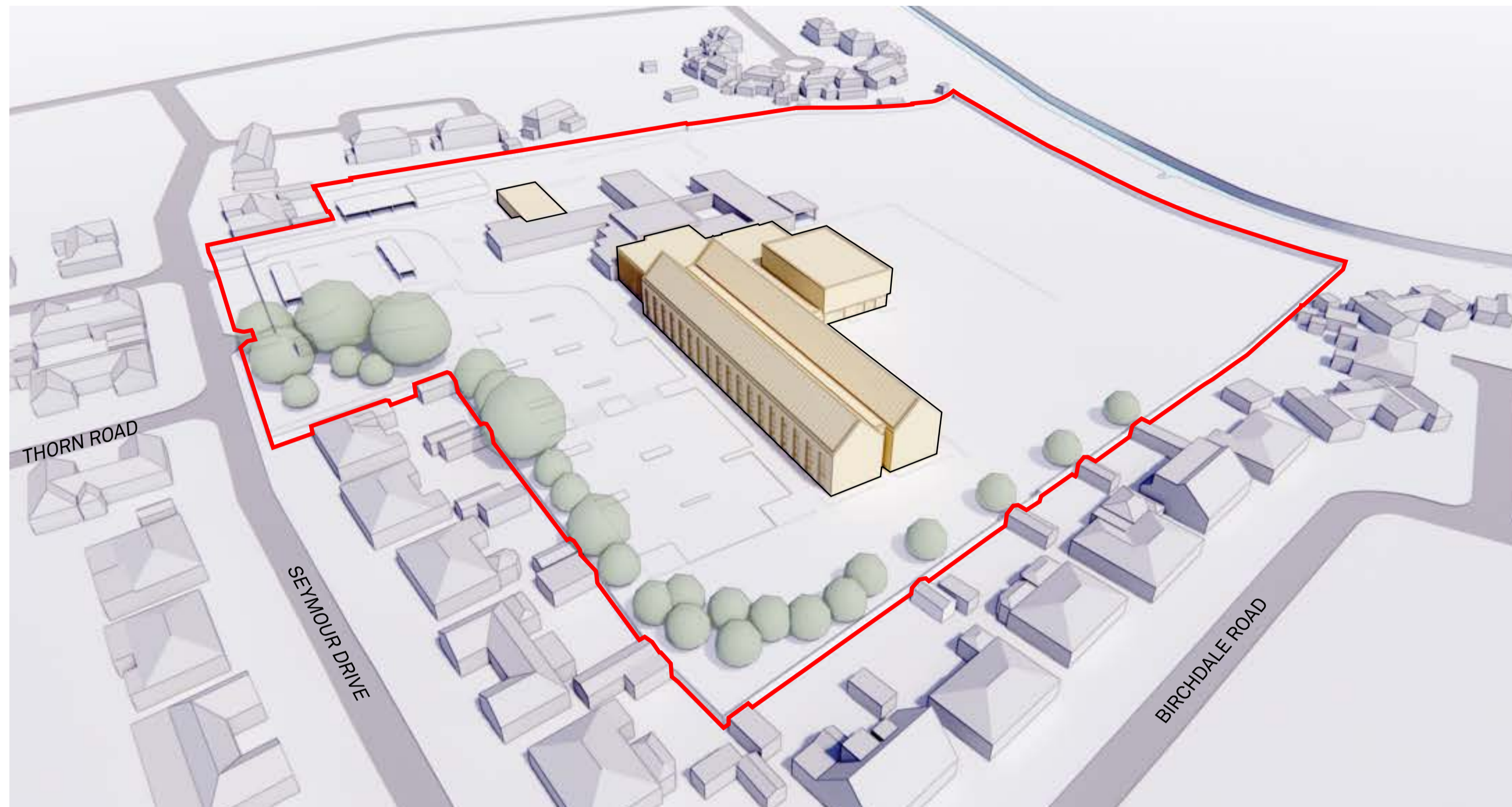
The landscape scheme will also be developed working with the scheme ecologists. We will look to retain and enhance the biodiversity of the site where possible. The proposed scheme will look to provide visual buffers to the residential areas and soften the functional hard landscape areas to the frontage of the scheme with new tree planting.



# BRUCHE ACADEMY, WARRINGTON

## PROPOSED 3D MASSING IMAGES

Archive Copy Retained For Reference Only

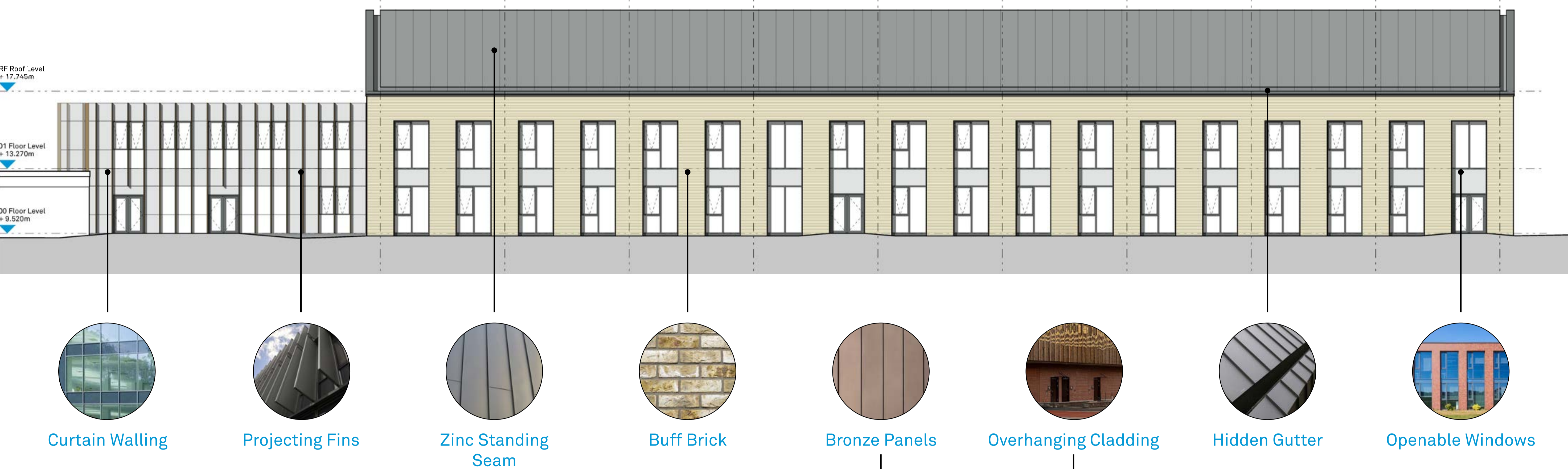


# BRUCHE ACADEMY, WARRINGTON

## MATERIALITY

Archive Copy Retained For Reference Only

Proposed Front Elevation



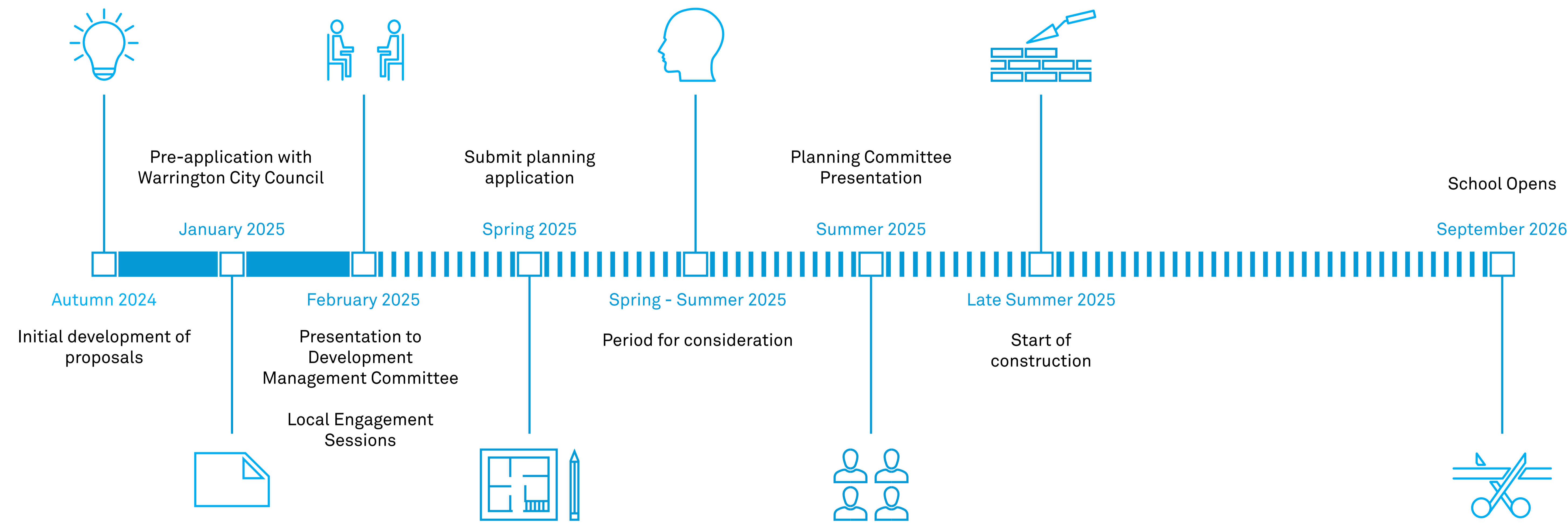
Proposed Rear Elevation



# BRUCHE ACADEMY, WARRINGTON

## TIMELINE

Archive Copy Retained For Reference Only

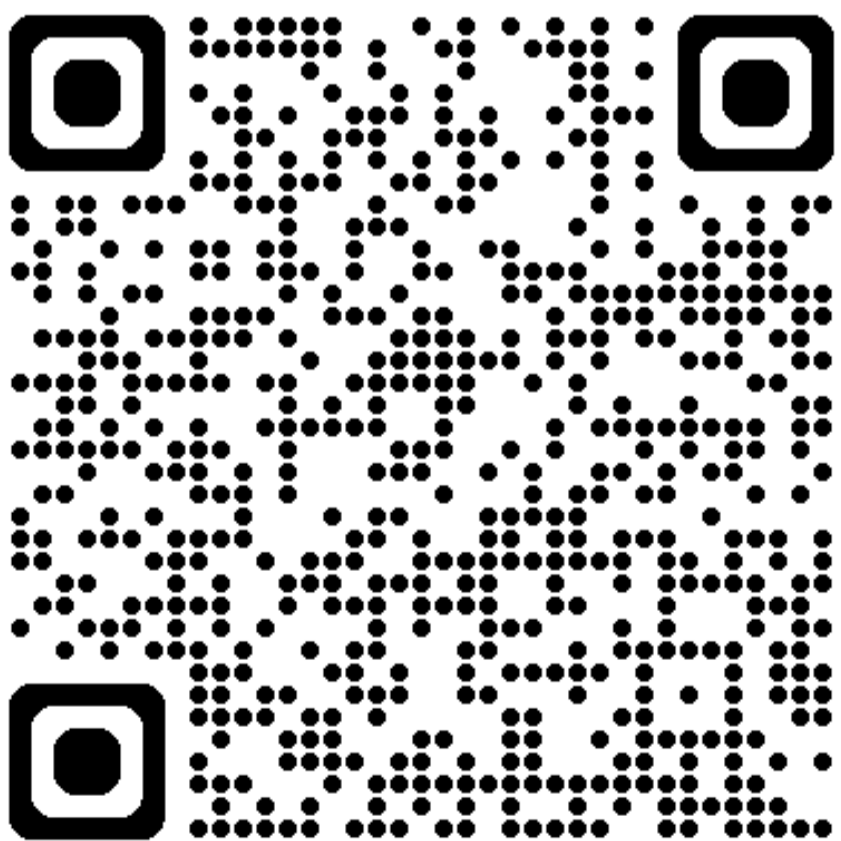


### Next Steps:

It is intended that a Planning Application will be submitted to Warrington Council Planning Department in Spring 2025.

- The Local Planning Authority will then provide an opportunity for members of the public to comment on the final proposal submitted to the planning portal.
- We welcome your comments on the new school building. Comments can be made by completing the feedback forms available here in person or via our online survey. The web address to view the consultation boards and complete the survey online is listed on the feedback form.

The adjacent QR code leads to the Bruche Primary website page dedicated to the proposed extension where updates will be shared regularly.



Design intelligence, commercial flair.